



Brook

# Firmware Update Guide

---

## PS1/PS2 to PS3/PS4/SW converter

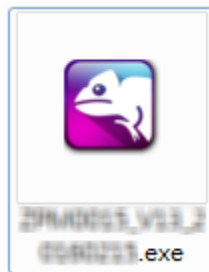


This document describes how to update the firmware of PS1PS2 to PS3PS4SW converter.

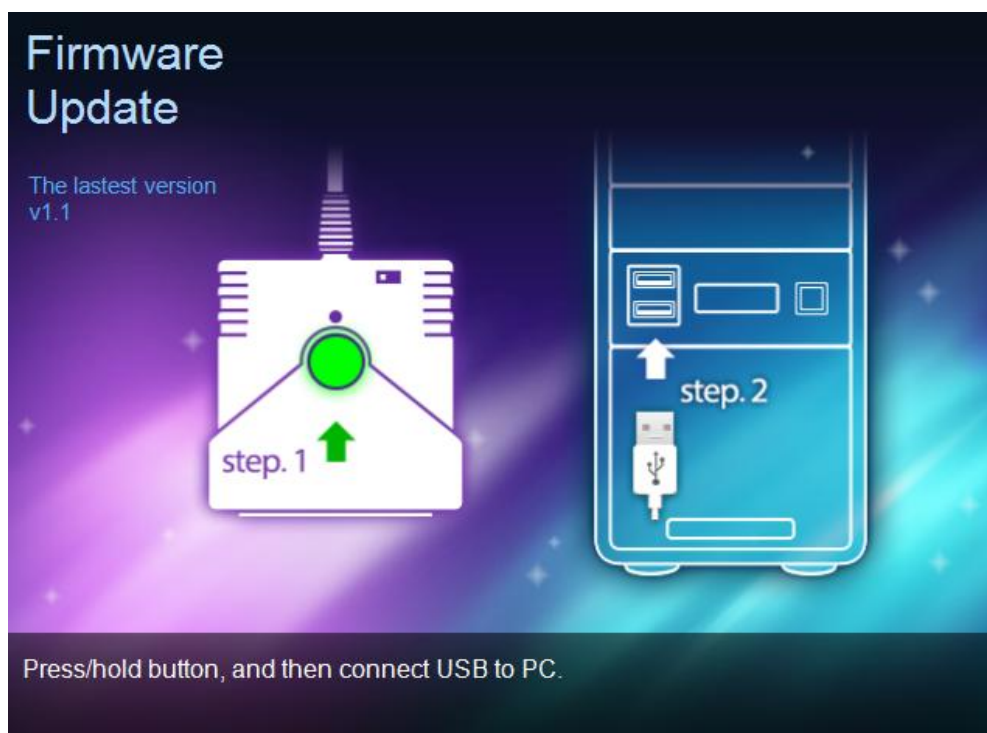
- ⚠ **NOTE** : The update must be done on a PC; it cannot be done on a console.
- ⚠ **NOTE** : Make sure your PC is connected to the internet.
- ⚠ **NOTE** : You may try to disable antivirus, or run the program as administrator.
- ⚠ **NOTE** : You may need to wait a while for the PC to finish automatically installing the driver before you can execute the program(when converter LED lights up)

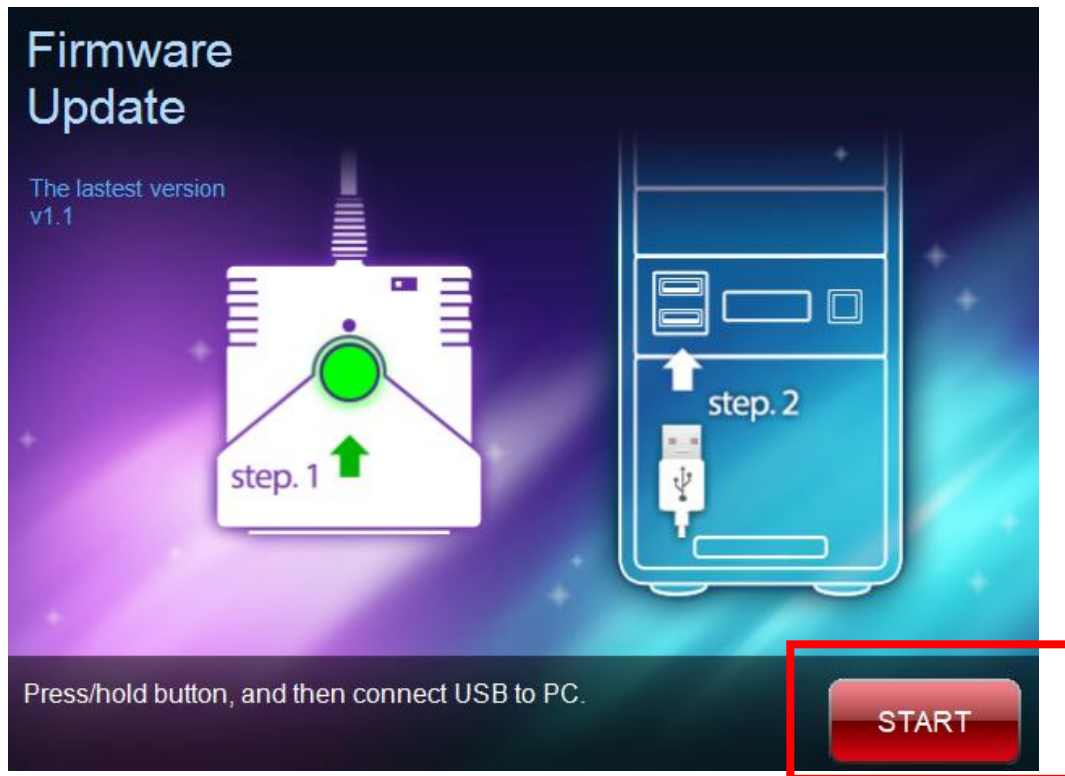
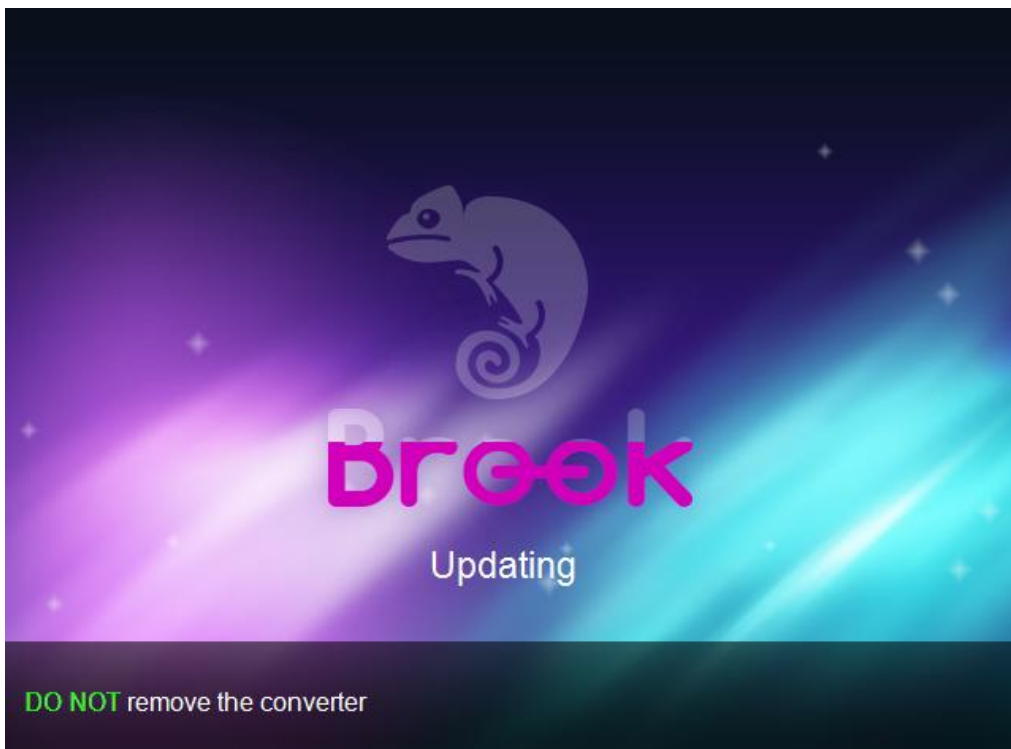
**STEP 1** Download the update file from “[Download](#)” on Brook website:

[www.brookaccessory.com](http://www.brookaccessory.com)

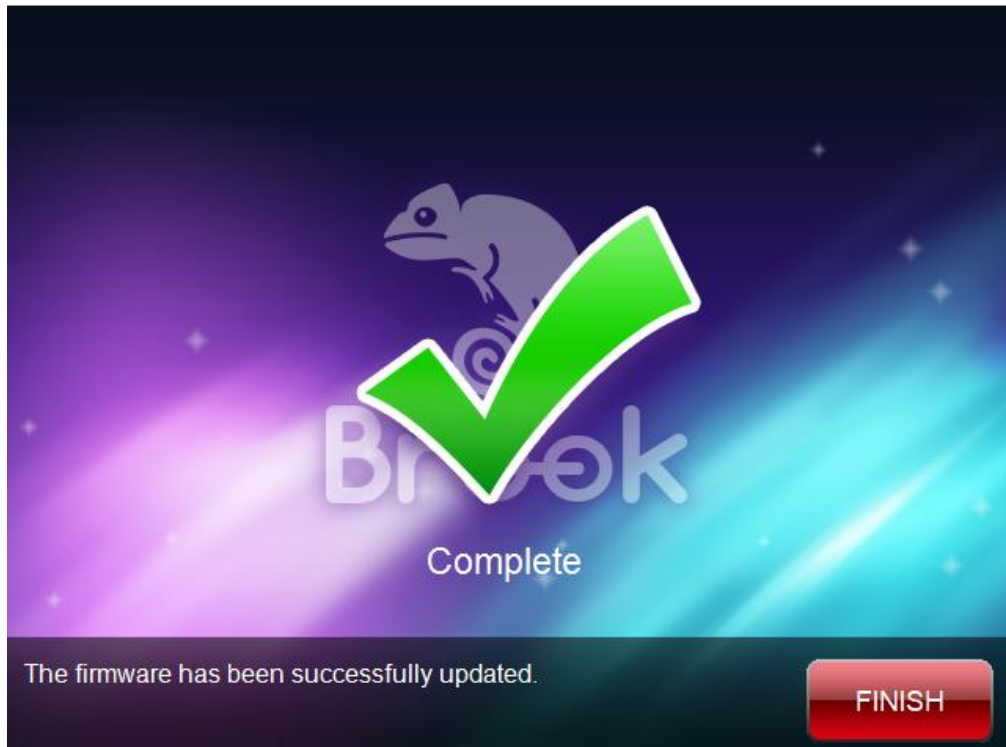


**STEP 2** Hold down the converter button and plug it into PC



**STEP 3** Click START**STEP 4** **DO NOT** disconnect during the update process

**STEP 5** The following screen will be shown when the update has successfully finished.



**STEP 6** In case firmware update fails, the following screen will show up, and please try to start over the update.

We recommend that you visit our website [www.brookaccessory.com](http://www.brookaccessory.com) and download the update file again before restarting the update.

